

# EDEN ♦ GLEN

No matter what direction you travel,  
good times surround you  
at Eden Glen Townhomes.



## CHOOSE FROM THREE FLOOR PLANS



## EDEN GLEN TOWNHOMES FEATURES

- Beautiful and spacious 2 or 3 bedroom floor plans designed to ensure your comfortable lifestyle
- Two private entrances
- 1 1/2 baths
- Generous closet space
- New stainless steel kitchen appliances including dishwasher and disposal
- Granite kitchen counters and new maple cabinetry
- Full basement with glass block windows
- Laundry tub and front loading washer/dryer
- New windows and exterior doors
- All new trim and interior doors
- New carpet and flooring throughout
- Individual central air and gas heat
- Pre-wired for cable
- Management company handles all outside maintenance chores

## LOCATION

Eden Glen Townhomes are located off Miller Road between Pennsylvania and Aurelius. Use Cedar Street Exit 104.



## EDEN GLEN TOWNHOMES

6165 Scotmar Drive  
Lansing, MI 48911

## SALES INFORMATION

James Pyle  
Lana Wagner and Company  
517.351.5777  
www.lanawagner.com



HUBBELL  
BRIARWOOD



# EDEN ♦ GLEN

In the center of everything, and in the center of your life, **Eden Glen Townhomes** are conveniently located just seconds from I-96 and the Cedar Street Exit with quick and convenient access to I-496 and US-127, too. Head downtown Lansing to the Capitol area for dining, shopping, a Lugnuts game and a movie or zip into East Lansing for the fun and excitement of the campus scene. No matter what direction you travel, good times surround you at Eden Glen Townhomes.

The Lansing area abounds with cultural and recreational opportunities—museums, libraries, concerts, theater, sports teams and so much more. Whatever your pleasure, there is no shortage of exciting things to do in every direction from your Eden Glen Townhomes.

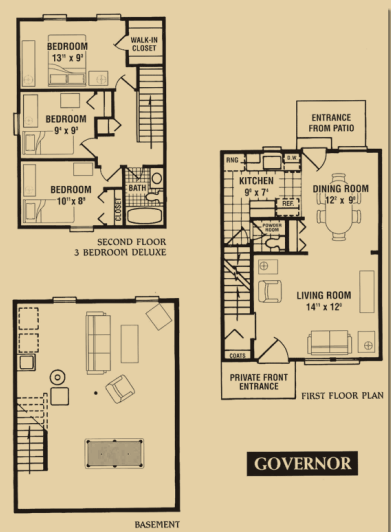
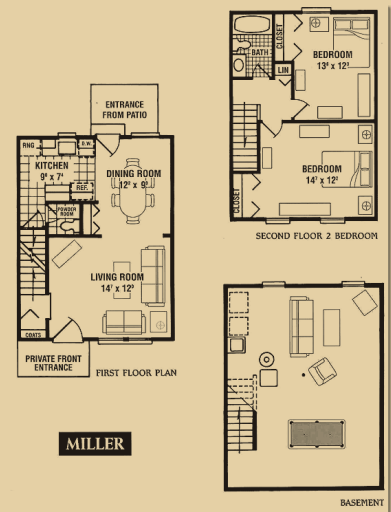
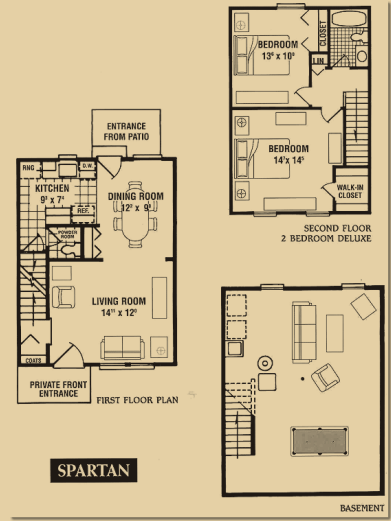
## EDEN GLEN TOWNHOMES FEATURES

- Beautiful and spacious 2 or 3 bedroom floor plans designed to ensure your comfortable lifestyle
- Two private entrances
- 1 1/2 Baths
- Generous closet space
- Kitchen Appliances including dishwasher and disposal
- Full Basement
- Laundry tub and washer/dryer hook ups
- Individual central air & gas heat
- New windows and storm doors
- Pre-wired for cable
- Covered Parking
- Management Company handles all outside maintenance chores

## LOCATION

Eden Glen Townhomes are located off Miller Road between Pennsylvania and Aurelius. Use Cedar Street Exit 104.

## CHOOSE FROM THREE FLOORPLANS



**EDEN GLEN TOWNHOMES**  
6165 Scotmar Drive  
Lansing, MI 48911

**SALES INFORMATION**  
877-96-CONDO

